

WIRELESS WEATHER STATION

INSTRUCTION MANUAL

1. Introduction

Thank you for purchasing this internet-based Weather Station which provides you with the most accurate forecast information available, customized to your exact location! Designed for everyday use, the weather station will prove to be an asset of great value for your personal use in the home or office. Please read this instruction manual thoroughly to fully understand the correct operation of your weather station and benefit from its unique feature. *This Instruction Manual is part of this product and should be kept in a safe place for future reference. It contains important notes on setup and operation.*

1.1 Package Contents

- 1x Display station
- 1x Wireless USB transmitter
- 1x Weather_station PC software
- 1x Instruction manual
- 1x AC/DC adapter (not included)
- 2 x "AA" Alkaline Batteries (not included)

1.2 Feature

- 5 Day Accurate Weather for Over 1,500 cities and areas in the world to select.
- Full Day Forecasts for Today, Tomorrow, Day 3, Day 4 and Day 5
- Daily HI / LOW Temperature Forecasts
- UV intensity indicator
- 14 weather forecast icons
- 7 different languages selectable for day display: English, German, French, Italian, Spanish, Danish, Dutch
- Current indoor and outdoor temperature (°F/°C)
- 2-alarm with snooze
- LED back light
- Calendar 2000-2099
- 12/24 hour format selectable
- Time/time zone/ DST synchronized with your PC setting
- 50m Wireless Range
- Internet Connection and Computer for Web-Based Set-Up are Required
- Indoor Temperature Range: 32°F to 122°F (0°C to 50°C)

1.3 What you need to get started:

- High-speed Internet connection – cable, DSL or other broadband Internet service will work.
- Simple Software Installation Necessary
- USB transceiver plug into computer's USB port
- 2 "AA" Alkaline batteries for the Wireless Display

NOTE: Rechargeable batteries are not recommended due to the wide variation in performance between brands and types. Please use only fresh Alkaline batteries

- After the transmitter has registered the Display, the forecast data will show up on the display

2. Set Up

2.1 Software installation

System requirement

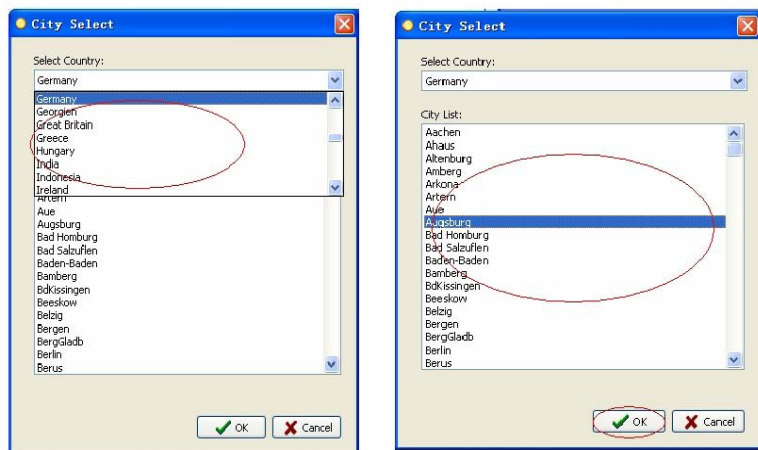
To install the "Weather_ask" software onto your PC, the minimum requirements are as follows:

- Operating System: Windows NT4(Service Pack>=6a), Windows2000, Windows XP, Windows Vista
- Internet Explorer 6.0 or above
- Processor: Pentium III 500 MHz or above
- Memory: at least 128MB, 256MB recommended
- CD-ROM Drive

Installation of the software

Please plug the USB transmitter into the computer's USB port before installing the software

1. Switch on your PC and insert the CD-ROM into the CD-ROM Drive
2. Double click "setup.exe". It's recommended that you close all other applications before continuing
3. Click next to continue
4. Click install key and the software will be installed automatically
5. After finishing installation, there is a small popup window of City Select which opens automatically and the window closes after a specified time. Select the country from the "Select Country" scroll down menu, then select the city from the "City list" menu. Click "OK" to confirm the selection



and set the desired hour by using the "▲" (up) key or "▼" (down) key. Press the **mode** key again to enter the alarm minute time set mode(the minute digits will flash) and set the desired minute by using the "▲" (up) key or "▼" (down) key. Press the **mode** key to confirm and exit the alarm1 time setting mode.

Alarm2 setting

Procedures and settings is similar to alarm1 setting

Time setting

- While in time display mode, hold the "mode" key to enter date and time setting mode. Press the "mode" key to select the following setting in sequence :

- Calendar setting(year /month /date)
- Language for day display: English, German, French, Italian, Spanish, Danish, Dutch
- 12/24hour
- Manual time setting (hours/minutes)

In the above setting modes, press the up key or down key to change or scroll through the values. Holding the "▲" (up) key or "▼" (down) key for 3 seconds will increase/decrease the digits in larger steps.

"light/snooze" key

While in the normal mode, press the "light/sn" key, the backlight will illuminate for 5 seconds.

When time alarm is triggered, the alarm will sound for 120 seconds. Press any key to mute the alarm.

Press the "light/sn" key to enter the snooze mode, the alarm icon will flash, the snooze time is 5 minutes.

5. Specifications

USB transmitter transmission distance	: 50meter max.
Frequency	: 433MHz
Interval of USB transmitter read the internet data	: 1 hour
Interval of USB transmitter transit the data to Display:	55 seconds
Indoor temperature range	: 0°C to +50°C (32°F to 122°F)
Resolution	: 1°C

Power requirements

Base station	: 2XAA 1.5V LR6 Alkaline batteries
Wireless USB Transceiver	: Powered by computer's USB port



Please help in the preservation of the environment and return used batteries to an authorised depot.

All rights reserved. This handbook must not be reproduced in any form, even in excerpts, or duplicated or processed using electronic, mechanical or chemical procedures without written permission of the publisher.

The information in this handbook is regularly checked and should errors be notified, these are corrected in the next issue. We accept no liability for technical mistakes or printing errors, or their consequences.

All trademarks and patents are acknowledged.

3.3 UV intensity indicator

The UV intensity indicator is to show the UV intensity level from 0-12



UV Index

Extreme: 11, 12+
Very high: 8, 9, 10
High: 6, 7
Moderate: 3, 4, 5
Low: 0, 1, 2

3.4 E-connection indicator



When the display station receives the weather data successfully from the USB transmitter this icon would be indicated. When the display station is on the register mode this icon would be flashing. When the register fail this icon will disappear.

3.5 2-alarm indicator



Alarm 1 on,  icon show up

Alarm 2 on,  icon show up

4. Program Mode

There are 6 control Keys located on the front of the Wireless Display: "register", "▼(down)", "▲(up)", "alarm", "mode" and "light/snooze". The following information is divided into sections based on the function of each Key.

"register" key

- Hold the "register" key to manually update weather forecast data.

"▲"(up) key

- While in the time setting mode, press "▲" (up) key to increase the value. Hold the up key to increase digits in large steps.

"▼"(down) key

- While in normal display mode, press the "▼" (down) key to shift the display of temperature unit degree Celsius or Fahrenheit.

- While in the time setting mode, press the "▼" (down) key to decrease the value. Hold the "▼"(down) key to decrease the digits in large steps.

"alarm" key

While in normal display mode, press the "alarm" key to select the alarm in the following sequence: alarm1 on, alarm 2 on, alarm1 and alarm 2 both on, alarm 1 and alarm 2 both off.

"mode" key

Alarm1 setting

While in alarm1 display mode, hold the "mode" key to enter alarm1 setting mode(the hour digits will flash)

6. Click finish key to close the set up wizard

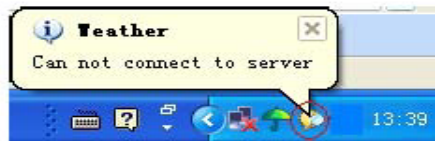
7. You should see the "Weather" program minimized to the bottom right corner of the windows taskbar.



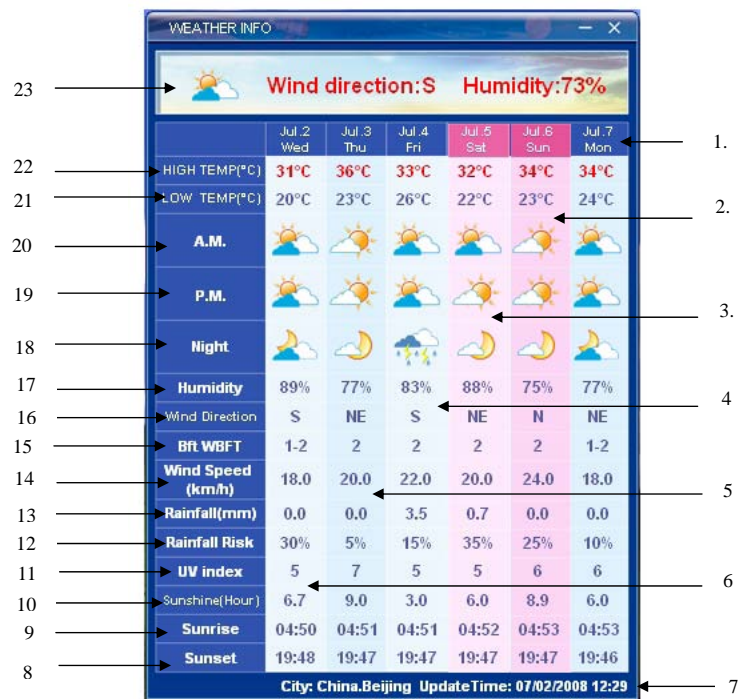
8. Update data successfully, the window will show the last update time



9. If it cannot connect to the server or the network is disconnected, the following window will appear



10. After installation and update data successfully, the following window will appear



1. the 5th day weather forecast *
2. the 4th day weather forecast.
3. the 3rd day weather forecast.
4. the 2nd day weather forecast.
5. the 1st day weather forecast
6. current day weather forecast
7. current data update time and city information *
8. sunset time *
9. sunrise time *
10. sunshine time *
11. UV index
12. rainfall risk *
13. rainfall(mm) *
14. wind speed(km/h) *
15. Beaufort wind scale *
16. wind direction *
17. humidity *
18. night weather forecast *
19. P.M. weather forecast *
20. A.M. weather forecast *
21. Lowest temperature
22. highest temperature

3.2 Weather forecasting

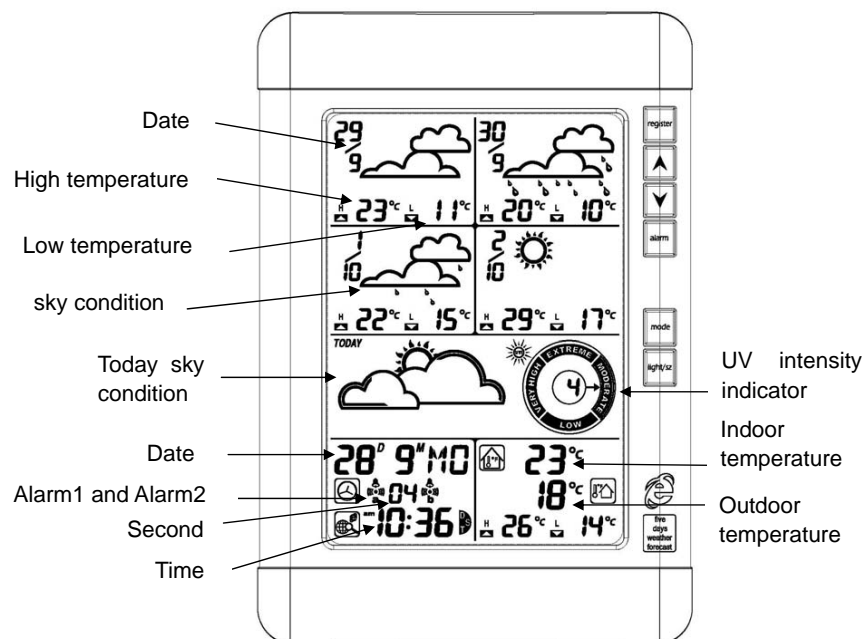
	Today	future
Sunny		
Partly cloudy		
Cloudy		
Light rain		
Moderate rain		
Heavy rain		
Thunderstorm winds		
Snow and light rain		
Snow and moderate rain		
Snow and heavy rain		
Snow		
Snow and Thunderstorms		
Shower		
Thunderstorm		

3. Overview

This section will teach you how to use your Wireless Display once you have completed online registration.

3.1 Display station-LCD

The following illustration shows a normal LCD display for description purposes only. 5 Day Forecast, both days have a sky condition icon with daily HI and LO temperature



23. Scrolling display of instance weather data: temperature, humidity, pressure, windspeed, windirection, dewpoint, visibility etc.

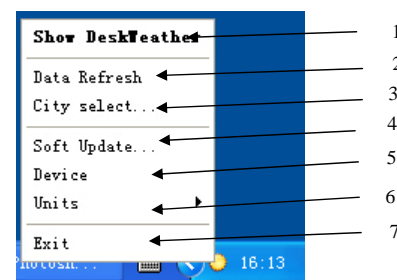
* **Note:** the data does not display on the display station

USB checking After the initial installation (and when powering up) the PC will check whether the USB transmitter is connected. If the USB transmitter is not connected the following window will appear.



Software program

Right click the icon, the following window will appear on the screen:

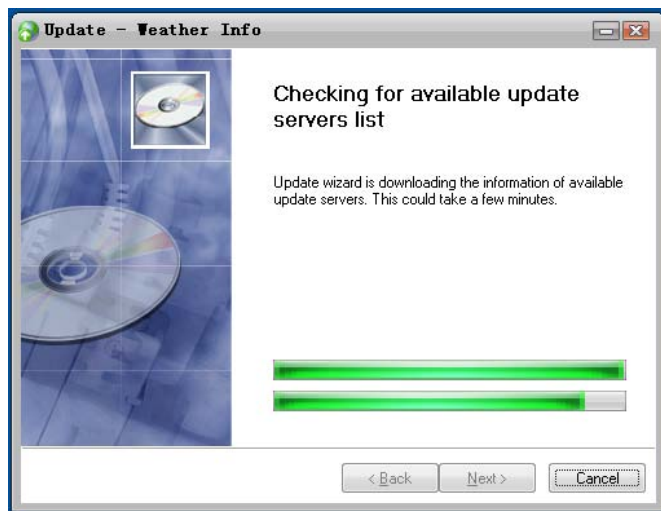


1. Switch the Deskweather windows minimize or maximize
2. Manual update weather data from website
3. Select your desired forecast location. Wait a few minutes for the website to update the Display Station with your selected forecast location information
4. Soft update
- 5 This function is not available on this model
6. Selects Metric or Imperial units for PC display
7. Exit the program

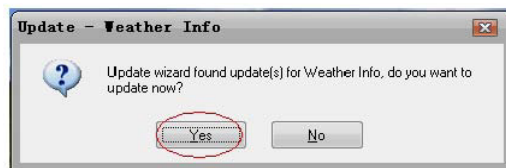
Soft update



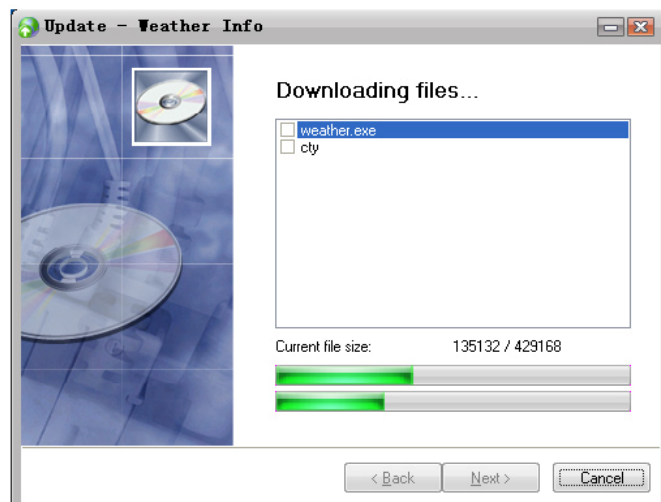
click here, "soft update" program maximized to the screen.



When find the update file



Click "Yes" to start download, click "Cancel" to cancel the update.



Click "Finish" to apply the updates and reboot the system.



2.2 Wireless USB transmitter installation.

Please plug the USB transmitter into the computer's USB port. The LED will flash when the USB transmitter works.

The Wireless USB Transmitter sends weather forecasts to your Wireless Display over a maximum 150 ft. range. Walls and other obstructions between the Wireless USB Transceiver and Wireless Display will affect the range.

2.3 Display Station Installation

- Open the Display station's battery cover located at the back of the unit and insert 2xAA, 1.5V alkaline batteries into the battery compartment and close the battery cover.
- When the Display station is powered up, a short beep will sound and start to register the USB transmitter.
- The Display station updates the weather forecast every 55 seconds. Or you can hold the "register" key to clear the weather forecast and manually update the weather forecast information.
- There is an antenna on the backside of the display station to improve the signal reception.

NOTE:

If the display can't receive the weather forecast data from USB transmitter, please remove batteries from the display and **wait 1 minute**. Install fresh brand name **alkaline** batteries into the Display. Make sure to insert the batteries with the "+" and "-" ends aligned with the diagram in the battery compartment.